

Foodservice Equipment • Material Handling, Healthcare & Cleanroom Equipment • Retail Display

# Spec-Bar-2000® Ice Chests



Item #:	_____
Model #:	_____
Project #:	_____
SIS #:	_____

Optional Accessories	Model #	Qty.
Two-circuit cold plate		
Eight-circuit cold plate		
19" (483mm)-wide extra depth		
Speed rail		
Bottle rack		



- Body, legs and crossbracing constructed of type 304 stainless steel for strength and corrosion resistance.
- Stainless steel adjustable bullet feet.
- Ice bin insulated with foamed-in-place insulation for maximum efficiency.
- Non-metallic breaker strip prevents heat transfer to ice bin.
- Removable two-piece stainless steel cover for cleaning ease.
- Rectangle openings provided in backsplash for tubing.
- Optional cold plates available.
- Optional deeper ice bin available on 19" (483mm) wide models.

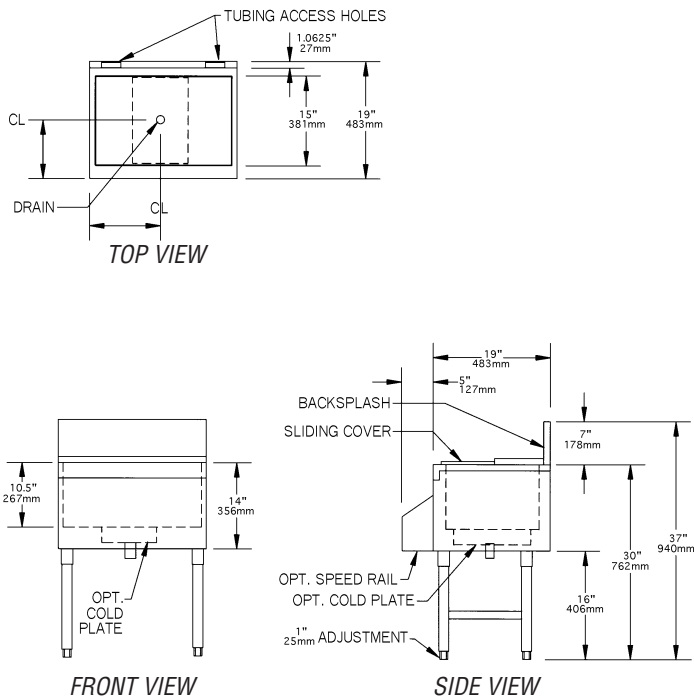
Spec sheets available for viewing, printing or downloading from our online literature library at [www.eaglegrp.com](http://www.eaglegrp.com)

## Spec-Bar-2000® Ice Chests

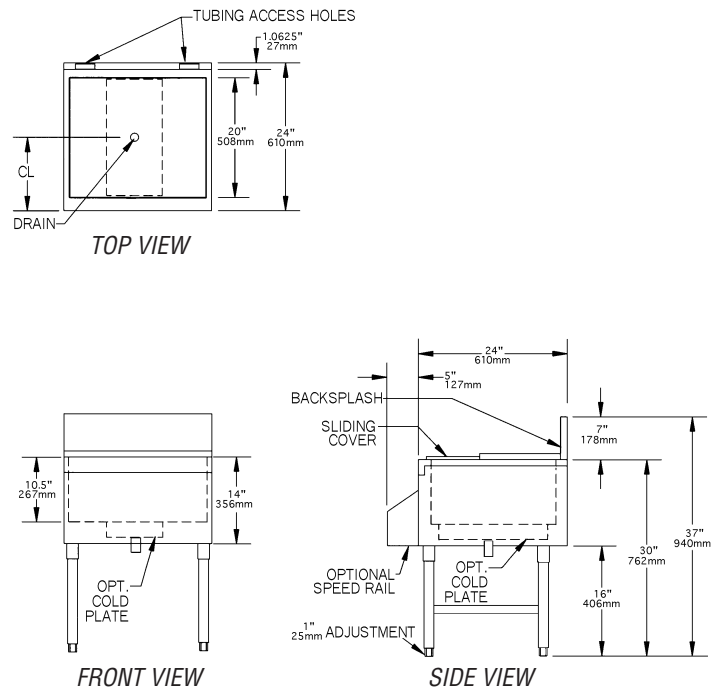
### Design and Construction Features

- Standard model drains are a 1½" (38mm) tailpiece, cold plate model drains have ½" (13mm) NPT.
- All models include type 304 stainless steel sliding cover.
- Two-circuit cold plates and eight-circuit cold plates available for all models (except where noted in charts).
- Cold plate connection connection is ¼" (6mm) O.D. stainless steel tubing with swaged end.
- Tubing access hole dimensions are 7⁄8" x 2⁄7" (22 x 73mm) and capacity per hole is 12 lines of ¼" I.D. x 3⁄8" O.D. (6 x 10mm) nylon braided tubing.
- Interior ice bin is 10½" (267mm) deep in standard models and 14½" (368mm) deep in extra deep models.
- Legs are 1½" (41mm) diameter type 304 stainless steel with stainless steel bullet feet.

### 19" wide (483mm)



### 24" wide (610mm)



width x length		weight		capacity		model #
in.	mm	lbs.	kg	lbs.	kg	
19" x 12"	483 x 305	30	13.6	34	15.2	B12IC-19*
19" x 18"	483 x 457	37	16.8	50	22.8	B18IC-19*
19" x 24"	483 x 610	50	22.7	67	30.4	B24IC-19
19" x 30"	483 x 762	70	31.8	84	38.0	B30IC-19
19" x 36"	483 x 914	80	36.3	101	45.6	B36IC-19
19" x 42"	483 x 1067	90	40.8	117	53.2	B42IC-19
19" x 48"	483 x 1219	100	45.4	134	30.7	B48IC-19

\* There are no optional cold plates available for these models.

width x length		weight		capacity		model #
in.	mm	lbs.	kg	lbs.	kg	
24" x 12"	610 x 305	35	15.9	43	19.3	B12IC-24*
24" x 18"	610 x 457	40	18.1	64	28.9	B18IC-24**
24" x 24"	610 x 610	60	27.2	85	38.5	B24IC-24
24" x 30"	610 x 762	75	34.0	106	48.2	B30IC-24
24" x 36"	610 x 914	85	36.3	127	57.8	B36IC-24
24" x 42"	610 x 1067	90	40.8	149	67.4	B42IC-24
24" x 48"	610 x 1219	100	45.4	170	77.7	B48IC-24

\* There are no optional cold plates available for this model.

\*\* For B18IC-24, only an optional 2-circuit cold plate is available.