

DOUGHPRO[®]

STEARNS PRODUCT DEVELOPMENT CORPORATION
20281 Harvill Ave, Perris, CA 92570 Tel: (800) 624-6717 - Fax: (951) 657-4594

Operation Manual

DPR3000

Dough Roller / Sheeter



DOUGHPRO
20281 HARVILL AVE
PERRIS, CA 92570

PHONE: (951) 657-0379
TOLL FREE: (800) 624-6717
FAX: (951) 657-4594

Website: www.doughpro.com
E-Mail: info@doughpro.com

Listed:



WARNINGS FOR OPERATOR



CAUTION
DO NOT OPERATE DOUGH ROLLER
WITHOUT THE GUARDS IN PLACE



CAUTION
DO NOT CLEAN THIS DOUGH ROLLER
WHILE IT IS PLUGGED IN



CAUTION
DO NOT USE SHARP OBJECTS
TO CLEAN ANY PART OF THE MACHINE



CAUTION
KEEP HANDS AND FINGERS
CLEAR OF MOVING PARTS



CAUTION
DO NOT PLACE ITEMS
OTHER THAN DOUGH INTO THE CHUTE



CAUTION
IN CASE OF POWER CORD DAMAGE,
DO NOT ATTEMPT TO REPAIR
OR REPLACE THE POWER CORD.
CONTACT THE MANUFACTURER
OR THE LOCAL DISTRIBUTOR



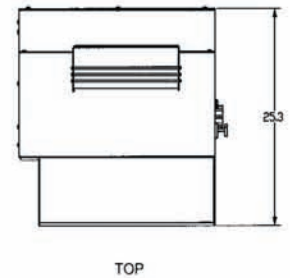
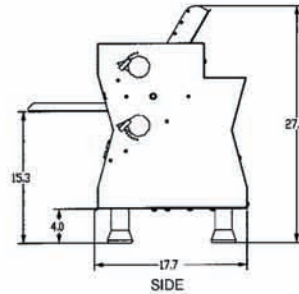
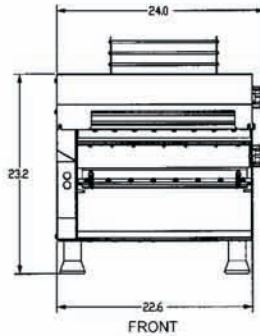
CAUTION
DO NOT USE OIL OR GREASE
ON MACHINE PARTS
AS THEY DO NOT
REQUIRE RE-LUBRICATION

Dough Roller (double pass)

- Heavy duty stainless steel construction.
- Compact table top design, allows for easy placement on any counter or mobile base.
- Spring loaded scrapers make it easy to remove and clean rollers.
- Rolls up to an 18" crust.
- Simple two pass design for ease of use.
- Maintenance free drive system.
- Wide hopper, great for large dough balls.
- Perfect for rolling a large variety of dough balls such as: Focaccia, Calzones, Pie Crusts, Roti, Pita Bread and more.



ON/OFF Switch	Yes	Electrical Data 115v/60hz 8.8 amps
Bearings	Sealed	
Adjustable Thickness	Yes	230v/50hz 4.4amps
Legs	4"	Shipping Weight 182 lbs. / 81 kgs.
Finish	Stainless	



Operating the DPR3000 2-pass roller is simple. Follow these easy steps.



Once you have pre-portioned & floured your doughballs, place a small amount of flour in the hopper and on the receiving table. Next place your doughball in the hopper.



Pass 1. Your doughball will be partially flattened and semi oblong. Rolling out on the floured receiving table.



Pass 2. Is just like the first pass but now you are going to turn your dough 90 degrees left or right inserting it into the bottom rollers.



After your dough is rolled out it is good to place your hands beneath the bottom chute and lightly stretch your dough to its desired sizing placing it directly on your pan, screen or peel.

Specifications, Details and Prices are subject to change without prior notice.
Please call for current pricing.

DOUGHPRO

20281 Harvill Ave, Perris CA, 92570

(800) 624-6717 (562) 531-0305 FAX (951) 657-4594



DOUGHPRO®

Website: www.doughpro.com • E-Mail: info@doughpro.com

DOUGHPRO[®]

STEARNS PRODUCT DEVELOPMENT CORPORATION
20281 Harvill Ave, Perris, CA 92570 Tel: (800) 624-6717 - Fax: (951) 657-4594

HOW TO OPERATE THE DPR3000

Once the doughballs have been pre-portioned & floured, place a small amount of flour in the hopper and on the receiving table. Next, place the doughball in the hopper.



Pass 1. The doughball will be partially flattened and semi oblong, rolling out on the floured receiving table.



Pass 2 is just like the first pass, but this time, turn the dough 90 degrees left or right, inserting it into the bottom rollers.



After the doughball is rolled out, place hands or receiving tray beneath the bottom chute. Lightly stretch dough to the desired size after placing it directly onto a pan, screen, or peel.



DOUGHPRO®

STEARNS PRODUCT DEVELOPMENT CORPORATION
20281 Harvill Ave, Perris, CA 92570 Tel: (800) 624-6717 - Fax: (951) 657-4594

HOW TO CLEAN THE DPR3000

The unit should be unplugged before cleaning!

Loosen the screws to open the safety shield.



Detach the springs at each end.



Remove all scrapers.



HOW TO CLEAN THE DPR3000 (CONTINUED)

Clean rollers, scrapers, tray, and machine housing with a damp cloth, then with a dry cloth.



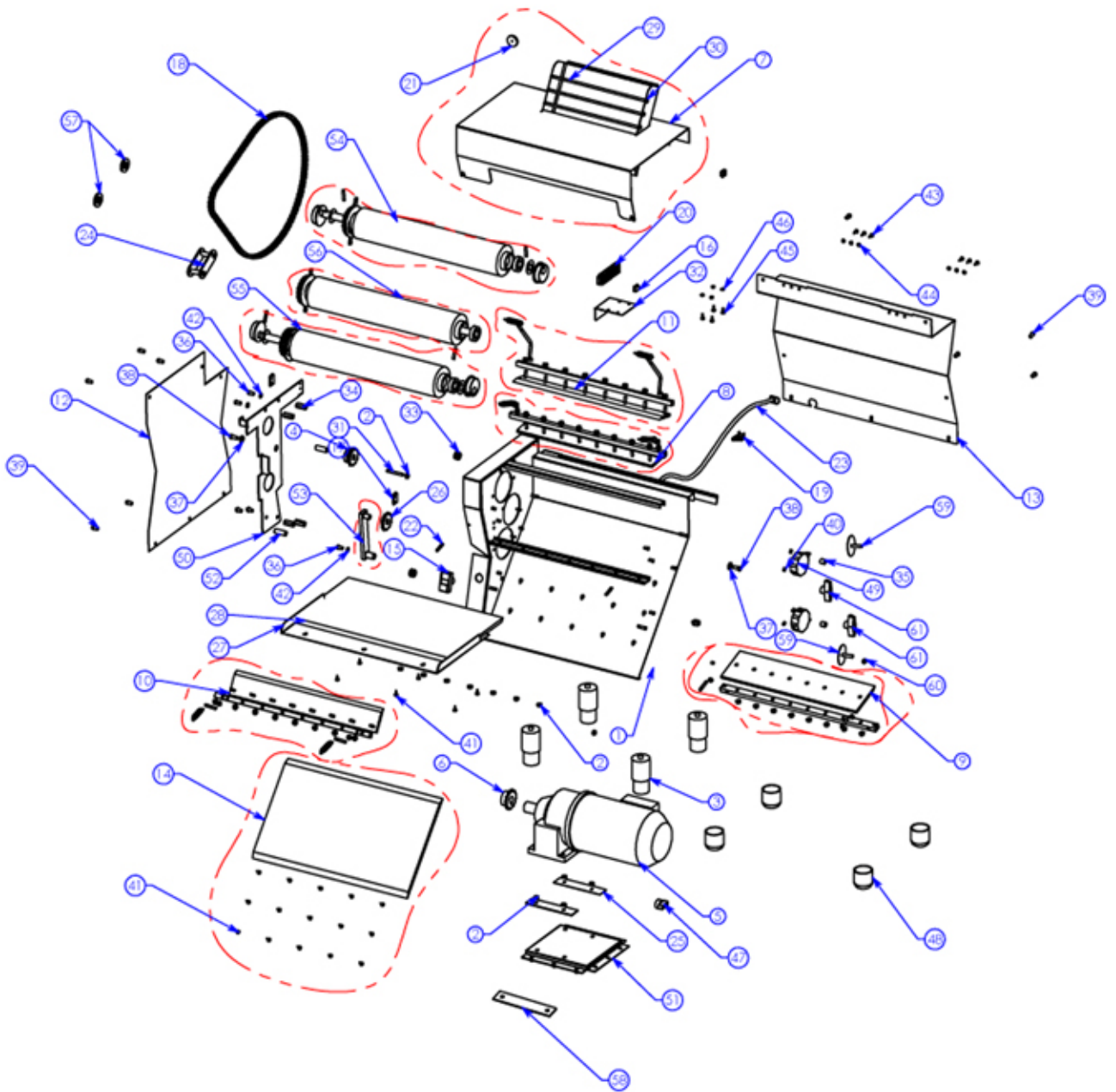
Re-attach the scrapers and springs.



Tighten the screws on the safety shield.



DPR3000 EXPLODED VIEW



DOUGHPRO®

STEARNS PRODUCT DEVELOPMENT CORPORATION
20281 Harvill Ave, Perris, CA 92570 Tel: (800) 624-6717 - Fax: (951) 657-4594

DOUGHPRO / PROPROCESS CORPORATION

PARTS LIST FOR DPR3000

ITEM NO.	PART NUMBER	DESCRIPTION	QTY.
1	1101097001	FRAME ASSEMBLY 1	1
2	NHF1420	1/4-20 SERRATED HEX NUT 21	21
3	1101097091	ADJUSTABLE LEG 4	4
4	1101097019	SPROCKET ASSEMBLY 1	1
5	1101097077	3/4 HP MOTOR	1
6	1101097078	SPEED REDUCER SPROCKET	1
7	1101097041	SAFETY COVER ASSEMBLY	1
8	1101097053	TOP FRONT SCRAPER # 2 ASSEMBLY	1
9	1101097059	MIDDLE FRONT SCRAPER # 3 ASSEMBLY	1
10	1101097066	BOTTOM FRONT SCRAPER # 4 ASSEMBLY	1
11	1101097046	BACK SCRAPER # 1 ASSEMBLY	1
12	1101097093	LEFT SIDE COVER	1
13	1101097092	BACK COVER	1
14	1101097073	DISCHARGE PLATE	1
15	1101097083	ON/OFF COMBINATION SWITCH	1
16	1101097081	RELAY	2
17	1101097082	PROXIMITY SWITCH	2
18	1101097084	# 41 CHAIN	1
19	MPS90014	STRAIN RELIEF	1
20	6994	TERMINAL BLOCK	1
21	1101097076	ENCASED CERAMIC CUP MAGNET	1
22	1101097086	1/4-20 HEAD THUMB SCREW	2
23	110969174	POWER CORD	1
24	1101097085	#41 LOCKING LINK CHAIN	1
25	1101097008	SHOCK MOUNT RUBBER	2
26	1101097014	IDLER SPROCKET ASSEMBLY	1
27	1101097037	IN-TAKE TRAY SHELF SUB ASSEMBLY	1
28	1101097040	INTAKE TRAY	1
29	1101097044	SAFETY BAR	3
30	1101097045	#3 E-clip	6
31	1101097079	PIN, TENSION SPRING	1
32	1101097080	RELAY BRACKET	1
33	110969116	GROMMET	2
34	1101097094	5/16-18 x 1/8 HEX COUPLIN	4
35	1101097089	ADJUSTING BAR KNOB SPACER	2
36	SB142058	1/4-20 X 5/8 BUTTON HEAD SCREW	5
37	WSAE516	5/16 WASHER	2
38	SB5161834	5/16-18 x 3/4 BUTTON HEAD SCREW	4
39	SB142012	1/4-20 X 1/2 BUTTON HEAD SCREW	13

DOUGHPRO / PROPROCESS CORPORATION

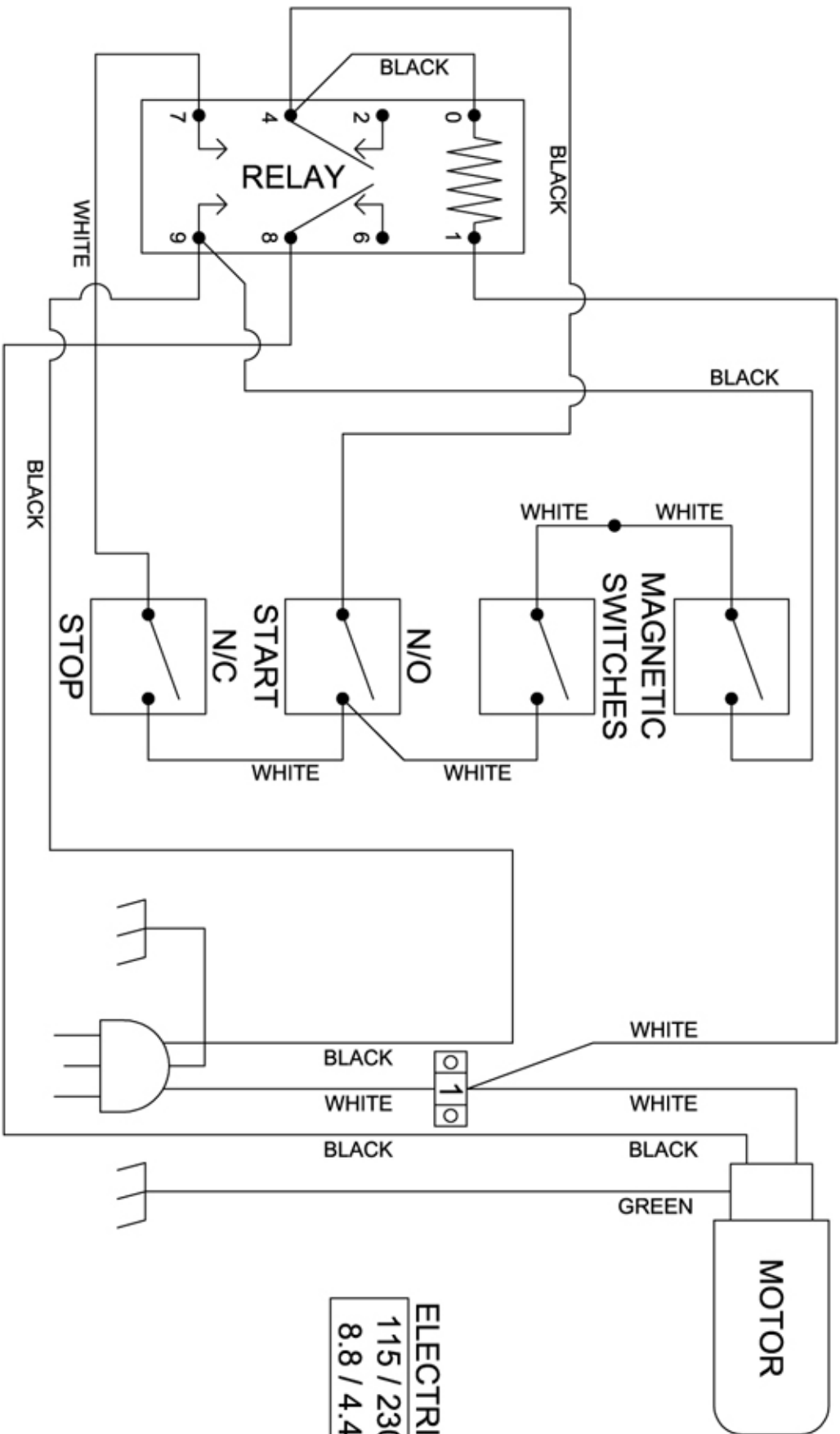
PARTS LIST FOR DPR3000

40	SST142038	1/4-20 X 3/8 SET SCREW	4
41	SP63214ST	6-32 x 3/8 LONG	21
42	WSAE1420	1/4 -20 WASHER	5
43	SP103238	10/32 X 3/8 PHILLIPS SCREW	6
44	WSAE1032	10/32 WASHER	6
45	SP0832	10/32 X 3/8 PHILLIPS SCREW	6
46	NH832	8-32 HEX NUT	14
47	1101097099	3/8 CLAMP CONNECTOR	1
48	1101097096	NEOPREME FOOT PAD	4
49	1101097090	OLD FLUTED KNOB	2
50	1101097075	CHAIN GUARD	1
51	1101097006	MOTOR BASE ASSEMBLY	1
52	1101097074	THREADED SPACER	2
53	1101097009	IDLER SPROCKET ASSEMBLY	1
54	1101097020	TOP ROLLER ASSEMBLY	1
55	1101097035	BOTTOM ROLLER ASSEMBLY	1
56	1101097032	MIDDLE ROLLER ASSEMBLY	1
57	1101097105	MIDDLE ROLLER SPACER	2
58	1101097106	MOTOR SHIM	1
59	1101097107	ELEVATOR BOLT	2
60	1101097108	NYLON LOCKING WASHER	2
61	MPPK019	KNOB, PRESSURE ADJUST	2

DOUGHPRO®

STEARNS PRODUCT DEVELOPMENT CORPORATION
 20281 Harvill Ave, Perris, CA 92570 Tel: (800) 624-6717 - Fax: (951) 657-4594

MODEL DPR3000 WIRE DIAGRAM



ELECTRICAL RATING	
115 / 230	VOLTS
8.8 / 4.4	AMPS

Warranty & Return Policy

PROPROCESS CORPORATION warrants all products manufactured by it against defects in workmanship or materials from the date of purchase for a period of (1) year on parts and labor. ***This warranty applies to only equipment purchased and used in the United States.***

Exclusions:

1. **WOOD / GAS FIRED OVENS:** **PROPROCESS CORPORATION** warranty applies to the main body of the oven being steel / refractory and insulation shall be free from defects in materials and workmanship for a period of four (4) years from the date of purchase. The gas equipment shall be free from defects in materials and workmanship for a period of one (1) year from the date of purchase. This warranty excludes the tandoori and home oven.
2. **TANDOORI & HOME OVENS:** **PROPROCESS CORPORATION** warrants the Tandoori & Home Oven including gas equipment shall be free from defects in materials and workmanship for a period of one (1) year from the date of purchase.
3. Air compressors are excluded from this warranty, but **PROPROCESS CORPORATION** may act as a warranty expeditor in certain instances regarding these compressors. The air compressor manufacturer provides a limited warranty and a copy of this warranty is furnished with all compressors sold by **PROPROCESS CORPORATION**. For prompt handling of compressor warranty claims the instructions of the compressor manufacturer must be adhered to.
4. Equipment built to special order as well as accessories are not returnable unless defective within the terms of this warranty.
5. In no event shall **PROPROCESS CORPORATION** be liable for consequential damages arising out of the failure of any of its products if operated improperly or caused by normal wear or damage by operator abuse.

Returned Merchandise Policy:

Should it become necessary to return any of the company's products, the following instructions must be adhered to: First, contact our customer service department for approval and a return authorization number. Please have the serial number of your item available at that time! All merchandise must be shipped freight prepaid by customer or service agency. Subject to the inspection of the product by the company, a restocking charge of 15% of the Net purchased price paid to **PROPROCESS CORPORATION** will be assessed. Merchandise may not be returned for credit without prior written approval of **PROPROCESS CORPORATION**. Collect shipments will not be accepted.

If upon inspection by **PROPROCESS CORPORATION** or its Authorized Agent it is determined the equipment has not been used in an appropriate manner, has been modified, or has not been properly maintained, or has been subject to misuse, misapplication, neglect, abuse, accident, unauthorized modification, damage during transit, delivery, fire, flood, act of war, riot or Act of God, then this warranty shall be deemed null and void.

Terms & Conditions

1. Prices indicated in the PRICE LIST are suggested retail prices and are shown in U.S. DOLLARS.
2. Terms of Payment: 2% 10 days, NET 30 days.
3. **NEW ACCOUNTS:** Satisfactory credit information must be provided before open account status can be extended. Unless agreed otherwise, all shipments will be made C.O.D., CASH IN ADVANCE.
4. **PRICING:** Prices, specifications, model numbers, capacities and accessories are subject to change without notice.
5. **FREIGHT/ROUTING:** Method of shipment will be determined by **PROPROCESS CORPORATION** unless otherwise advised by PURCHASER.
6. **DAMAGED CLAIMS:** All merchandise shipped at purchaser's risk. Inspection must be made by purchaser at time goods are received. If goods are damaged, the PURCHASER shall request that the agent of the transportation company make a written notation on the proper shipping documents immediately and then file a claim for damage. GOODS DAMAGED IN SHIPMENT ARE NOT RETURNABLE.
7. **RETURNS:** Merchandise may not be returned without written authorization by **PROPROCESS CORPORATION**.
8. **TAXES:** Prices indicated herein DO NOT include State, Federal, Local or foreign taxes or duties, nor do they include fees, permits, insurance or other levies, all of which are the responsibility of the purchaser.
9. All orders are subject to acceptance by **PROPROCESS CORPORATION**.
10. Possession of this price list shall not be considered an offer to sell.

*Specifications, Details and Prices are subject to change without prior notice.
Please call for current pricing.*

DOUGHPRO®

STEARNS PRODUCT DEVELOPMENT CORPORATION
20281 Harvill Ave, Perris, CA 92570 Tel: (800) 624-6717 - Fax: (951) 657-4594