

Product Specifications

Combination Convertible Service Above Refrigerated Self-Service Case



MODEL SHOWN: HMBC4

NOTE: NON-DIVIDED UPPER DISPLAY AREA - HMBC2 & HMBC3
 DIVIDED UPPER DISPLAY AREA - HMBC4, HMBC5 & HMBC6

- HMBC2
- HMBC3
- HMBC4
- HMBC5
- HMBC6

| Lengths include end panels | |
|--------------------------------|--|
| 26-3/4"L x 34-1/4"D x 56-1/4"H | |
| 38-3/4"L x 34-1/4"D x 56-1/4"H | |
| 50-3/4"L x 34-1/4"D x 56-1/4"H | |
| 62-5/8"L x 34-1/4"D x 56-1/4"H | |
| 75-1/8"L x 34-1/4"D x 56-1/4"H | |

STANDARD FEATURES

- Breeze™ w/EnergyWise s/c refrigeration
- Clear glass shelf, lighted (T-8) in upper display
- Compressor air rear intake, front discharge. Toe kick cannot be blocked
- Condensate pan (self-contained refig. only)
- Convertible baffle in upper display
- Curved double pane, lift-up front glass w/o lock
- Cutaway end panel
- Flat front panel
- Integrated average product temperature of 40°F or less
- One year parts & labor; 5 year compressor warranty
- Rear sliding doors (26" model swinging)
- T-8 top & shelf lights

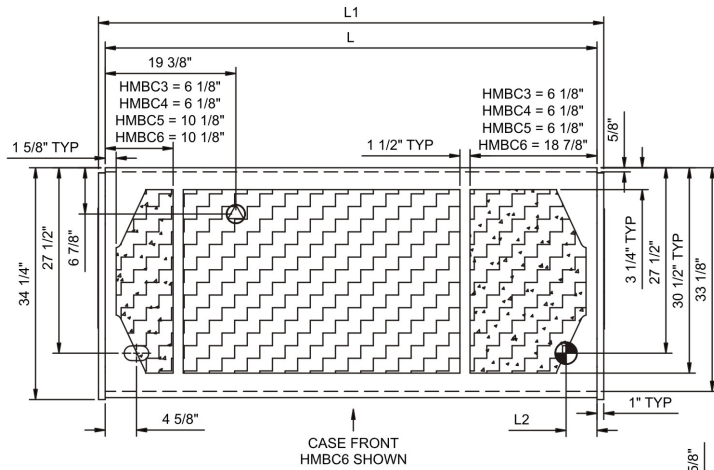
| Features | Standard | Options |
|----------------------------|--|---|
| EXTERIOR COLOR | <input type="checkbox"/> Laminated (non-premium) Confirm pattern/grain direction | <input type="checkbox"/> Laminated (premium) Confirm pattern/grain direction <input type="checkbox"/> Stainless steel (includes rear of case) |
| INTERIOR COLOR | <input type="checkbox"/> Black | <input type="checkbox"/> Stainless steel <input type="checkbox"/> White |
| REAR EXTERIOR COLOR | <input type="checkbox"/> Painted - White | <input type="checkbox"/> Painted - Black <input type="checkbox"/> Stainless steel (w/stainless ext. only) |
| TRIM COLOR | <input type="checkbox"/> Black | <input type="checkbox"/> Silver |
| BASE | <input type="checkbox"/> Levelers | <input type="checkbox"/> 6"H legs <input type="checkbox"/> Casters (n/a with remote) |
| LOWER REAR | <input type="checkbox"/> Solid back panel | <input type="checkbox"/> Rear sliding doors w/o lock (26" model swinging) (specify LH or RH hinge) |
| UPPER REAR | <input type="checkbox"/> Clear glass rear sliding doors w/o lock (26" model swinging) (specify LH or RH hinge) | <input type="checkbox"/> Reflective glass rear sliding doors w/o lock (26" model swinging) (specify LH or RH hinge) |
| ELECTRICAL CONNECT | <input type="checkbox"/> 6' straight blade power cord (self-cont.) | <input type="checkbox"/> 6' locking power cord (self-cont.) <input type="checkbox"/> Electrical leads (remote) |
| REFRIGERATION | <input type="checkbox"/> Breeze™ w/EnergyWise s/c refrigeration | <input type="checkbox"/> Note: Remote doesn't incl Conds unit. Floor drain reqd. <input type="checkbox"/> Remote w/thermostat, solenoid & TXV |
| MISCELLANEOUS | | <input type="checkbox"/> Additional shelf for upper display, T-8 lighted <input type="checkbox"/> LED 3500K lights <input type="checkbox"/> Lower rear door lock <input type="checkbox"/> Second year parts & labor warranty (excludes compressor) <input type="checkbox"/> Upper rear door lock |
| ACCESSORIES | | <input type="checkbox"/> 2"H Full depth display riser(s) for lower display <input type="checkbox"/> 4"H Full depth display riser(s) for lower display <input type="checkbox"/> Bottle slide, gravity feed <input type="checkbox"/> Clean Sweep® coil cleaner (n/a w/remote) <input type="checkbox"/> Night curtain, retractable, non-locking <input type="checkbox"/> Price tag moulding (matches trim color) <input type="checkbox"/> Rear wrapping board (n/a w/lower rear doors) <input type="checkbox"/> Removable wire security cover, locking (for lower display, secures upper/lower) |

Harmony

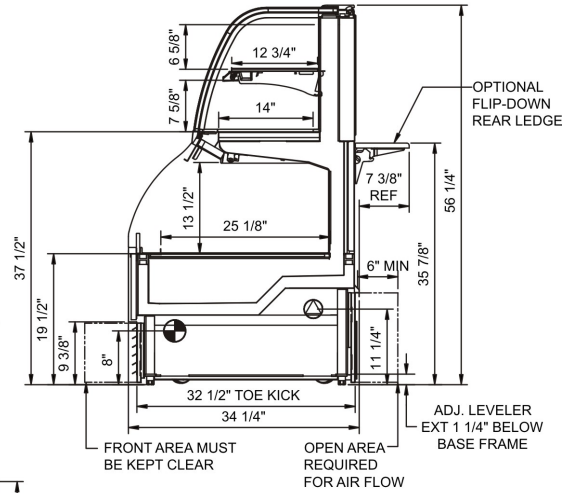
Product Specifications

| | | |
|--|---|---------------------------------|
| Intended Environment: Type I - Designed to operate in ambient conditions of 75°F with 55% relative humidity unless noted otherwise in system information below. | | |
| Zone | Intended Product To Be Displayed | Integrated Prod Temp ° F |
| All | Packaged refrigerated products | 40 |

PLAN VIEW



SIDE VIEW



NOTE: ALL DIMENSIONS APPROXIMATE

- ELECTRICAL JUNCTION BOX (SUPPLIED WITH 6" LEADS OR POWER CORD).
- LOCATION OF DRAIN TUBE FOR REMOTE REF. ONLY (SUPPLIED WITH 3/4" OR 1 1/2" PVC TUBE).
- REFRIGERATION LINE CONNECTION.
- REMOTE FLOOR SINK & UTILITIES ACCESS AREA.
- SELF-CONTAINED CASE SERVICE ACCESS AREA.
- DRY CASE SERVICE ACCESS AREA.

| Model Technical Specifications | | | | | | | | | | | | | | | |
|--------------------------------|-----|-------|------|----------------------|------------|----------|------|----------|-------|-------|-----------|-------------------|-------|---------|-------|
| Model | L" | L1" | L2" | System Circuit Volts | | Phs | Freq | Amps *** | Watts | Wires | NEMA Plug | SST | BTUH | Ship Wt | |
| HMBC2 | N/A | 26.75 | 3.63 | Remote(Type I) | Circuit #1 | 110-120 | 1 | 60 | 1.66 | 163 | 2+G | Leads Multiple | 20.00 | 2900 | 700 |
| | | | | Self-Contained | Circuit #1 | 110-120 | 1 | 60 | 14.92 | 1,415 | 2+G | 5-20P or L5-20P | N/A | N/A | |
| HMBC3 | N/A | 38.75 | 4.63 | Remote(Type I) | Circuit #1 | 110-120 | 1 | 60 | 1.38 | 138 | 2+G | Leads Multiple | 20.00 | 4750 | 800 |
| | | | | Self-Contained | Circuit #1 | 110-120 | 1 | 60 | 15.84 | 1,502 | 2+G | 5-20P or L5-20P | N/A | N/A | |
| HMBC4 | N/A | 50.75 | 4.63 | Remote(Type I) | Circuit #1 | 110-120 | 1 | 60 | 3.57 | 299 | 2+G | Leads Multiple | 20.00 | 6100 | 950 |
| | | | | Self-Contained | Circuit #1 | 120/230V | 1 | 60 | 10.50 | 1,868 | 3+G | 14-20P or L14-20P | N/A | N/A | |
| HMBC5 | N/A | 62.63 | 4.63 | Remote(Type I) | Circuit #1 | 110-120 | 1 | 60 | 3.99 | 280 | 2+G | Leads Multiple | 20.00 | 7300 | 1,100 |
| | | | | Self-Contained | Circuit #1 | 120/230V | 1 | 60 | 12.00 | 2,300 | 3+G | 14-20P or L14-20P | N/A | N/A | |
| HMBC6 | N/A | 75.13 | 4.63 | Remote(Type I) | Circuit #1 | 110-120 | 1 | 60 | 4.31 | 413 | 2+G | Leads Multiple | 20.00 | 8000 | 1,250 |
| | | | | Self-Contained | Circuit #1 | 120/230V | 1 | 60 | 13.71 | 2,242 | 3+G | 14-20P or L14-20P | N/A | N/A | |

*** Does not include electric defrost on freezer models.

Important Notes:

- 1) ELECTRICAL NOTE: If GFCI is required, a GFCI breaker MUST be used in lieu of a GFCI receptacle
- 2) 35" Minimum door entry clearance required (without shipping skid).
- 3) Units are supplied with levelers which must be adjusted during installation to ensure the unit is level and plumb.

Regulatory Approvals:

| | |
|------------|--|
| All Models | Accordance with AHRI Std 1200 ETL Listed to UL 471 ETL Listed to CAN/CSA 22.2 No. 120 ETL Sanitation to NSF 7 |
|------------|--|



In Accordance with
AHRI Std 1200

DOE 2012
Energy Efficiency
Compliant